

ISS10 2025

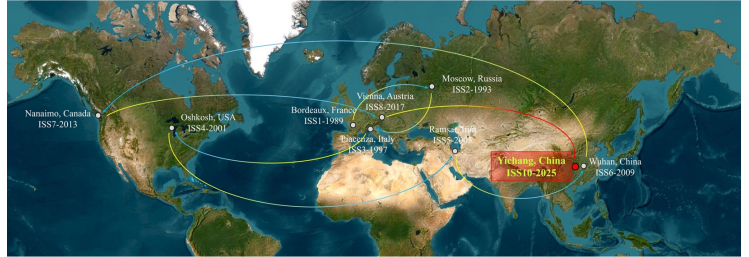


The 10th International Symposium on Sturgeon will be coming soon to Yichang, China, October 20-25th 2025

The ISSs

The International Symposium on Sturgeon (ISS) was initiated in 1989 in Bordeaux, France by a group of scientists interested in the conservation and aquaculture of sturgeons. It is a worldwide academic and technological forum. Since the World Sturgeon Conservation Society (WSCS) was established in 2003, the ISS has been co-organized by the WSCS every four years since ISS5. However, the ISS9, which was planned to take place in Qiandaohu, China in 2021, was canceled due to the COVID-19 pandemic. The ISSs have marked significant milestones, each a testament to the advancements in sturgeon research, including:

- ISS1 in Bordeaux, France in 1989
- ISS2 in Moscow, Russia in 1993
- ISS3 in Piacenza, Italy in 1997
- ISS4 in Oshkosh, USA in 2001
- ISS5 in Ramsar, Iran in 2005
- ISS6 in Wuhan, China in 2009
- ISS7 in Nanaimo, Canada in 2013
- ISS8 in Vienna, Austria in 2017
- ISS9 in Qiandaohu, China in 2021 (canceled)
- **ISS10 will take place in Yichang, China, October 20-25th 2025.**



ISS10

ISS10 will take place in Yichang, China. It will be organized jointly by Wuhan University, China Three Gorges University, and China Three Gorges Corporation on behalf of WSCS and the China Aquatic Wildlife Conservation Association. It aims to strongly contribute to find solutions to population declines and extinction of sturgeon species and their sustainable aquaculture.

The symposium's theme is:

"Is there a shared future for humans and sturgeons?"

By hosting the 10th ISS, we aim to inspire more individuals to join us in our mission to enhance the status of sturgeons. This necessitates the adequate protection and restoration of their habitats, the reduction of water pollution, and the elimination of overfishing. ISS10 is a platform for the exchange of scientific information and the promotion of collaboration. Whether it is an oral or poster presentation or a trade show, your participation is welcome and will be invaluable for sturgeon conservation efforts. We eagerly anticipate your attendance and contribution to this significant event in Yichang.

PROGRAM

OCTOBER 19

All day: registration
Evening: welcome party



OCTOBER 21

Morning: Parallel sessions
Workshops
Lunch break
Afternoon: Parallel sessions
Evening: WSCS General Assembly
WSCS Board meeting

OCTOBER 23

Morning: Parallel sessions
Packed lunch
Afternoon: 4 parallel technical tours
Closure of the conference
farewell banquet
Evening: (Three Gorges Project Camp)

OCTOBER 25

Joint workshop
(Wuhan University)
-optional-

OCTOBER 20

All day: registration
Morning: Opening ceremony
Plenary sessions
Lunch break
Afternoon: Parallel sessions
Evening: welcome banquet
City sightseeing

OCTOBER 22

All day: tour in Sturgeon Valley
(sturgeon farms, aquaculture sturgeon forum, traditional culture and food, Tu race dancing)

OCTOBER 24

City sightseeing
Post conference tours

SESSIONS (preliminary)

Five parallel sessions will be held throughout the symposium:

- S1. Global climate change and species survival
- S2. Basic biology and ecology of Acipenseriformes
- S3. Applied research & aquaculture
- S4. Human impacts & mitigation efforts
- S5. Caviar processing & marketing

TECHNICAL TOURS

Four technical tours will be scheduled in the afternoon on the 23rd of October. The preliminary tours are:

- Re-population program of Chinese sturgeon: Biodiversity Conservation Center, China Three Gorges Corporation
- Operation of the Three Gorges Project, Three Gorge Project Regulation Center, China Three Gorges Corporation
- Laboratory of Behavior Hydraulics, China Three Gorges University
- The reserve for the natural spawning of Chinese sturgeon, Yichang City Government

Note: each participant can choose one of two combinations of the four tours.

One night during the conference will be dedicated to a **students' party** at the student center of CTGU.

REGISTRATION FEES

Type of registration	Registered by July 15, 2025			Registered by September 15, 2025			After September 15, 2025		
	Cat A (\$)	Cat B (\$)	China (CNY)	Cat A (\$)	Cat B (\$)	China (CNY)	Cat A (\$)	Cat B (\$/€)	China (CNY)
WSCS member rate	200	350	1800	230	400	2000	250	450	2300
Non-member rate	250	400	2000	260	450	2300	270	500	2500
Students (WSCS members)	25	100	600	50	150	620	65	200	1200
Students (non members)	30	125	750	60	170	1000	75	225	1400
Spouses rate	100	225	1350	90	275	1650	100	325	2000

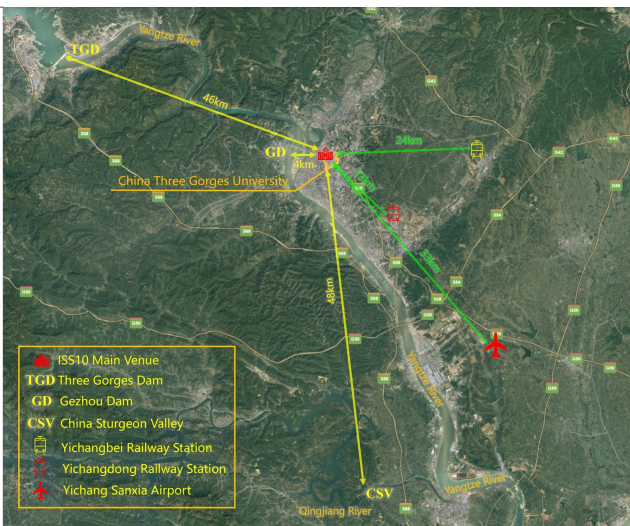
- Category A: All countries except those in Cat. B
- Category B: EU 27, Iceland, Norway, Switzerland, UK, USA, Canada, Japan.

As an established practice, special conditions will be provided for WSCS members and students and early bird registration. Additional discounts can be negotiated for group bookings from Category A countries. The full conference registration fee includes conference materials, the welcome party, participation in all meetings, daily lunches, coffee breaks, all banquets, and technical tours, but it does not include tourist excursions, the student party, etc.

Payment methods

Payments will be available online (soon on the ISS10 website: <https://ISS10.whu.edu.cn>) and at the main venue building during the conference.

ADDITIONAL INFORMATION



Yichang City (marked by a red seven-point star) is located in the western part of Hubei Province (highlighted in yellow) in China. The city is served by three major transportation hubs: two high-speed railway stations and one airport. The distances from these hubs to the conference venue are 13 km, 24 km, and 33 km, respectively.

How to reach Yichang

There are flights to Yichang from most of China's big cities daily, so the best option is to buy an Interline ticket to fly directly to Yichang City. A bus from the ISS organization will pick up all participants at the Yichang Airport.

Taxi

People can take a taxi roadside near the venue buildings. You can also call a car online via mobile phones using software with a car-hailing function (such as "Gaode Map" or "Dripping Travel"). Car hailing services require your mobile phone to have an online payment channel for the software to support the payment of fares, which is usually "Alipay" or "WeChat Pay."

Public Transportation

Public transport in Yichang is efficient, clean, and safe. The network provides modern and efficient access to the entire city. We have included a map of Yichang in your conference bag. Please use your mobile phone for detailed travel route information, such as "Gaode Map" or "Baidu Map."

Hotel Costs (USD \$/day, breakfast included)

Five stars: 80 - 60
 Four stars: 60 - 40
 Three stars: 40 - 30

Alternative meals

Two commercial districts near the venue offer alternative options. A more detailed map will be provided when you get to the conference venue.

Bank

A China Construction Bank and a 24-hour self-service bank (ATM) are near the conference venue. Details will be provided online and in the materials you will obtain at the conference venue.

Wi-Fi

Wi-Fi will be accessible during the conference. The code, username, and password will be included in the materials for participants.

NEXT MILESTONES

- From **July 10^o 2024**, the ISS10 website will be online, and it will be possible to register and make payments.
- At the **end of July 2024**, the call for abstracts will be open.
- At the **end of July 2025**, the accepted presentations and posters will be announced.